

**Community Action, Inc. has helped thousands of people work towards self-sufficiency since we opened in 1965.**

**During 2014-2015 with your help....**

- We served 7,446 Clarion and Jefferson County residents.
- We assisted 1,376 Clearfield and Jefferson County domestic violence victims.
- We distributed food to 1,711 of your Clarion neighbors.
- We arranged transportation to medical appointments for 1,347 Jefferson County residents.

**COMMUNITY ACTION, INC. WISH LIST:**

- \$25** - Provides budget counseling services for one family
- \$50** - Provides clothing/holiday gifts for one child
- \$202** - Provides assistance for one person to live in a shelter for 30 days
- \$225** - Provides food assistance for a family of four for one week
- \$253** - Provides heat for one month to a family not qualified for subsidy heating programs
- \$500** - Provides a family with housing for one month
- \$658** - Provides books and instruction to help an individual prepare to take the General Education Development (GED) Test
- \$759** - Provides one month support to a family living in a shelter due to domestic violence
- \$1,012** - Provides a family one year of case management to help them move to economic independence

Donations are vital to helping Clarion and Jefferson County families. Please complete this cut-out and return with your contribution. A donation can also be made through our website [www.jccap.org](http://www.jccap.org).

**105 Grace Way, Punxsutawney, PA 15767  
or 30A South Sheridan Road, Clarion, PA 16214**

YES, I/we want to support Community Action, Inc. and local families through this tax deductible gift of:

    \$25;     \$50;     \$100;     \$200;     \$500;     \$1,000;     other \$       

( ) Please use my donation where it will help most, or ( ) please use my donation for \_\_\_\_\_.

( ) I would like to volunteer my time. My interests are \_\_\_\_\_

Name: \_\_\_\_\_ Phone: \_\_\_\_\_

Address: \_\_\_\_\_

**Your donation may be tax deductible.**

Tax deductible means you can deduct your contribution on your federal income tax return because Community Action, Inc. is a 501(c) (3) tax exempt charitable corporation.

The official registration and financial information of Community Action, Inc. may be obtained from the Pennsylvania Department of State by calling toll free, within Pennsylvania, 1-800-732-0999. Registration does not imply endorsement.



**Jefferson County Office**  
105 Grace Way  
Punxsutawney, PA 15767  
**Phone:** (814) 938-3302

**Clarion County Office**  
30A South Sheridan Road  
Clarion, PA 16214  
**Phone:** (814) 226-4785  
**Toll Free:** (800) 997-7661

**Email:** [contact@jccap.org](mailto:contact@jccap.org)

**Executive Management**

- Robert A. Cardamone, *Executive Director*
- Susan K. Fusco, *Community Services Director*
- Rodney B. Rhodes, *Planning Director*
- Jennifer M. Sleppy, *Controller*

Find us on

**Community Action's National Goals**

- *Low-income people become more self-sufficient.*
- *Conditions in which low-income people live are improved.*
- *Low-income people own a stake in the community.*
- *Partnerships among supporters and providers of services to low-income people are achieved.*
- *Agencies increase their capacity to achieve results.*
- *Low-income people, especially vulnerable populations, achieve their potential by strengthening family and other supportive services.*

**Annual Report  
2014 - 2015**



[www.jccap.org](http://www.jccap.org)



**Our Mission**

Community Action, Inc. will be a community catalyst to provide and coordinate activities which promote family self-sufficiency and advance community prosperity.

**Our Vision**

Community Action, Inc. will be recognized as a premier organization dedicated to solving social and economic problems of the community.

## SERVICES PROVIDED

- ◆ Adult Education and Tutoring
- ◆ Career Development
- ◆ Case Management
- ◆ Community Development
- ◆ Domestic Violence Prevention
- ◆ Family Education Forums
- ◆ Financial Literacy & Budget Counseling
- ◆ Food Assistance
- ◆ Healthy Home Education and Services
- ◆ Holiday Activities, including Toys for Tots
- ◆ Income Tax Preparation
- ◆ Information and Referral
- ◆ Information Technology
- ◆ Job Skills Enhancement
- ◆ Medical Assistance Transportation
- ◆ Rent, Mortgage and Utility Assistance
- ◆ On-the-job Training
- ◆ Parent Education
- ◆ Senior Corps-RSVP
- ◆ Shelters for Homeless and Domestic Violence Victims
- ◆ Social and Economic Advocacy
- ◆ Veteran's Support Services
- ◆ Weatherization and Energy Education
- ◆ Youth Activities

## BOARD OF DIRECTORS

### Clarion County

#### Low-Income Representatives

Clara W. Belloit, Clarion Ministerium  
Lori A. Brown, Clarion County Housing Authority  
Renee Vowinkel, Pennies From Heaven

#### Elected Public Officials

G. Butch Campbell, Clarion County Commissioner  
Scott E. Hutchinson, State Senator  
Donna R. Oberlander, State Representative

#### Private Sector

Amy Ortz, Clarion County Assistance Office  
Lee N. Stewart, Stewart Laboratories<sup>3</sup>  
Ronald J. Wilshire, Clarion University of Pennsylvania<sup>2</sup>

### Jefferson County

#### Low-Income Representatives

Pamela M. Johnson, Jefferson-Clarion Head Start, Inc.<sup>4</sup>  
Melva J. McGranor, Jefferson County Area Agency on Aging  
Steve J. Mehok, Jefferson County Housing Authority

#### Elected Public Officials

Richard Beck, Mayor of Brookville  
Cris Dush, State Representative  
James P. McIntyre, Jefferson County Commissioner

#### Private Sector

Granville E. Carter, Carter Bianco, LLP  
Richard G. Fetterman, Shriners of North America<sup>1</sup>  
Rebecca Mitchell, Jefferson County Assistance Office

<sup>1</sup> President <sup>2</sup> Vice-President <sup>3</sup> Secretary/Treasurer <sup>4</sup> Assistant Secretary

## FINANCIAL INFORMATION

### Support and Revenues

Federal/State Grants	\$ 3,585,254
Contributions	145,885
In-Kind contributions	66,250
Special Events	1,675
Other Income	
-Consumer services	505,776
-Information Technology services	153,686
-Rental Housing	63,747
-Investment (loss)	(6,520)
-Miscellaneous	10,190
<b>Total Revenues</b>	<b>\$ 4,525,943</b>

### Expenses

Salaries & Wages	\$ 1,639,854
Client Travel & Assistance	1,194,289
Weatherization Services	370,024
Employee Benefits	309,923
Contracted Services	181,813
Payroll Taxes	123,706
Housing Assistance	216,603
Occupancy	70,418
Travel	44,300
Insurance	38,458
Information Technology	19,552
Telephone	31,882
Supplies	23,134
Utilities	27,498
Administration & Fiscal Services	19,819
Auto Expenses	9,820
Postage & Shipping	14,782
Other Consumer Support	65,568
Food & Meals	16,822
Printing & Publications	13,854
Depreciation, etc.	10,265
Licenses & Registration	16,645
Small Equipment & Tools	4,975
Volunteer Support	7,539
Miscellaneous	3,002
Returned to Funder	37,787
Federal Taxes	7,523
Administrative Fee	6,533
Equipment Rental & Maintenance	694
Advertising & Publications	6,246
Meetings	3,584
Training/Technical Assistance	2,367
Rental Property Expenses	1,442
Software	3,063

**Expenses Total** **\$ 4,543,784**

### Community Action, Inc. Statement of Financial Position June 30, 2015

#### Current Assets

Cash and Cash Equivalents	\$921,219
Grant Receivable	\$345,533
Other Receivables	\$222,532
Investments	\$45,261
Inventory	\$5,206
Prepaid Expenses	\$41,407
<b>Total Current Assets</b>	<b>\$1,581,158</b>

Property and Equipment (net of accumulated depreciation)

\$493,133

#### Total Assets

**\$2,074,291**

#### Current Liabilities

Accounts Payable	\$198,984
Accrued benefits and Withheld Taxes	\$10,055
Accrued Salaries	\$136,365
Deferred Revenue	\$10,594
Accrued Expenses	\$29,769
Security Deposits	\$680
<b>Total Current Liabilities</b>	<b>\$386,447</b>

#### Total Liabilities

**\$386,447**

#### Net Assets

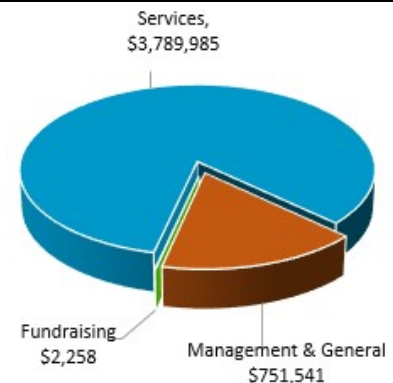
Unrestricted	\$1,605,101
Temporarily Restricted	\$82,742
Permanently Restricted	\$0

#### Total Net Assets

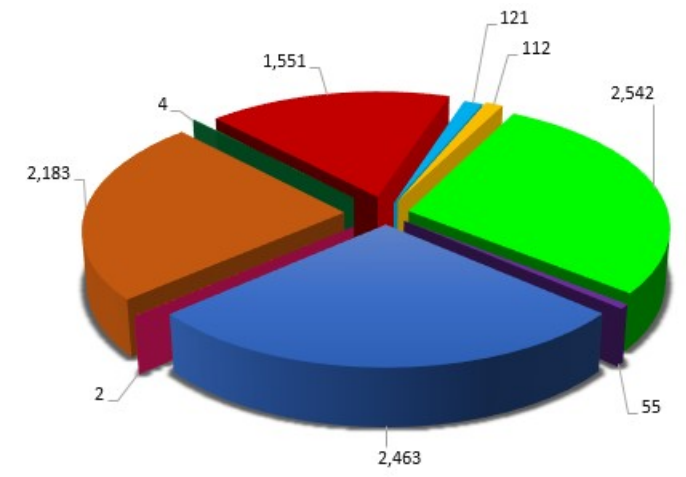
**\$1,687,243**

#### Total Liabilities and Net Assets

**\$2,074,290**



## INDIVIDUALS SERVED



- Employment
- Education
- Income Management
- Housing
- Emergency Services
- Nutrition
- Linkages
- Self Sufficiency
- Health

## ECONOMIC IMPACT

Wages contributed to the local economy	\$1,639,854
Real estate and payroll taxes contribute to the local economy	\$125,148
Purchase of goods and services from local vendors	\$2,308,870
Social services and direct assistance to residents	\$1,815,335
In-kind and volunteer services	\$38,450
Current value of real estate held	\$524,640

Services are provided without regard to race, color, religious creed, age, sex, ancestry, union membership, sexual orientation, gender identity, national or ethnic origin, disability, and without regard to whether the person is a victim of a violent crime (including domestic violence).

This document was financed in part by a grant from the federal Department of Health and Human Services under the Administration of the Commonwealth of Pennsylvania, Department of Community and Economic Development.

Community Action, Inc. is an Equal Opportunity Employer.